

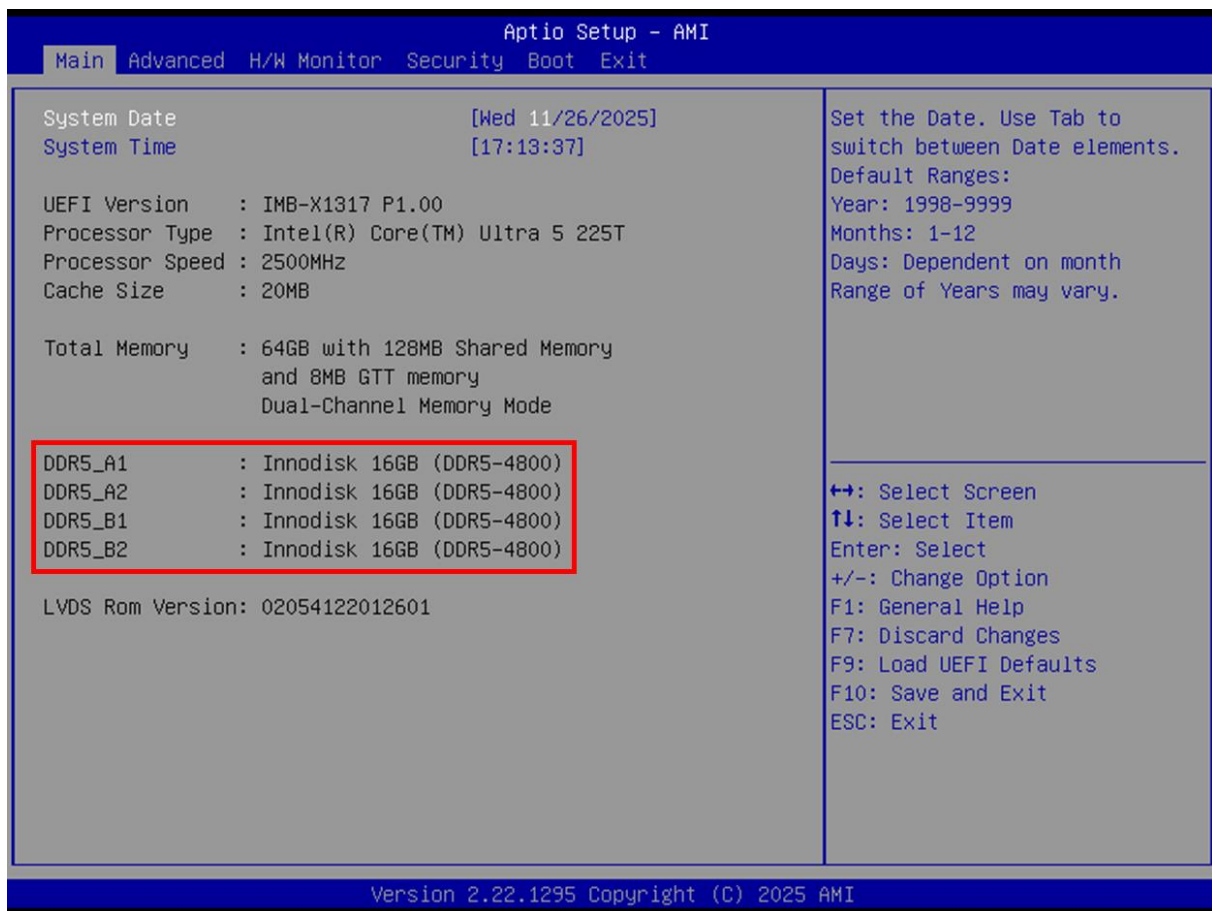
ASRockInd Technical Reference - Q&A

Question	What should I do to support maximum memory frequency up to 6400 MHz?
Release date	2026/01/07
Product	IMB-1715, IMB-X1715, IMB-X1715-10G, IMB-1317, IMB-X1317, IMB-X1317-10G, IMB-1246, IMB-1247, IMB-1248-WV, IMB-1249-WV, IMB-125P-WV, IMB-1250M-WV
FAQ type	<input checked="" type="checkbox"/> Specification <input type="checkbox"/> OS & Driver <input type="checkbox"/> Application <input checked="" type="checkbox"/> BIOS/FW <input type="checkbox"/> Others

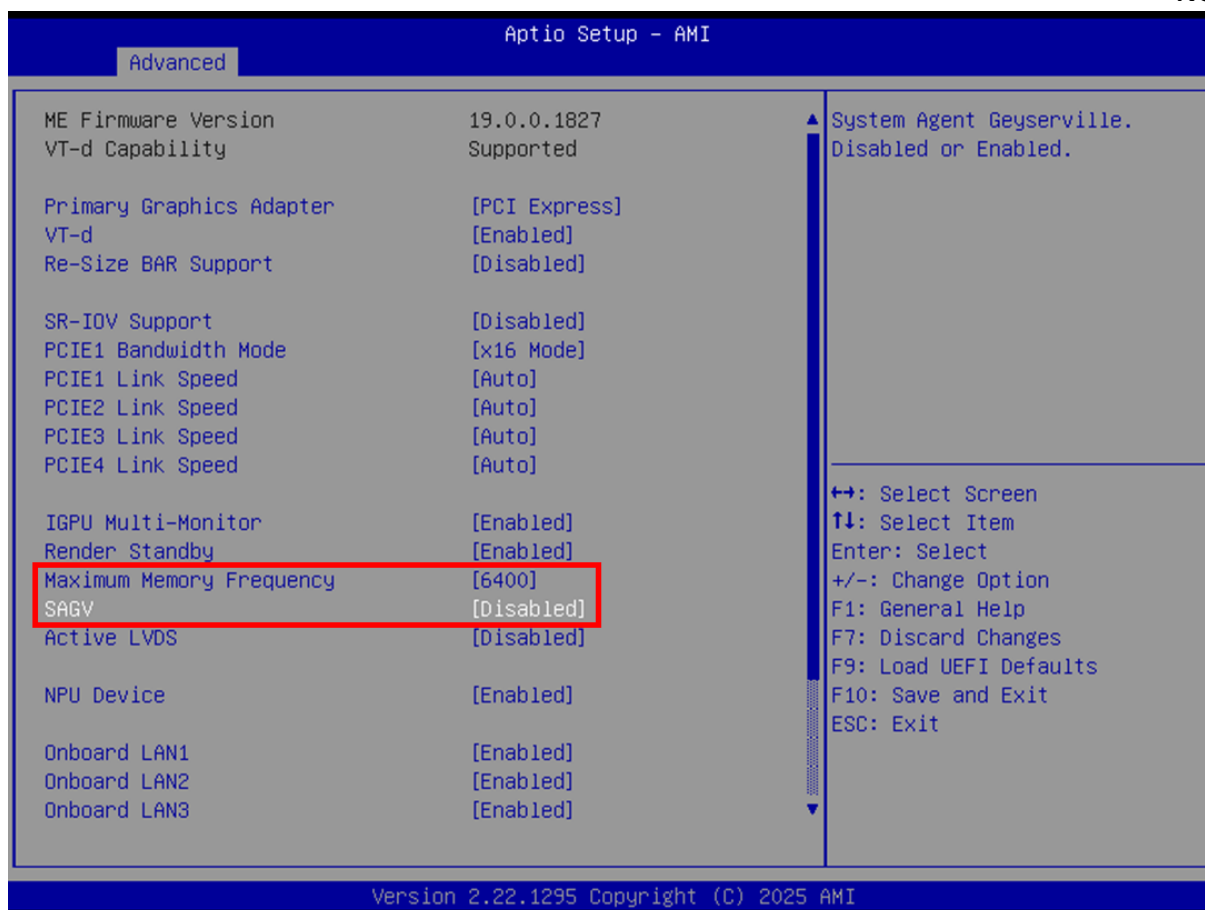
Answer:

To support maximum memory frequency up to 6400 MHz, please follow the steps below to adjust the memory frequency setting:

1. Check the current memory frequency on BIOS Main page



2. Please go to BIOS > Advanced > Chipset Configuration to modify following options:
 - 1) Maximum Memory Frequency set at [6400]
 - 2) SAGV* set at [Disabled]



3. Press F10 to save and exit. After the system is rebooted, please go to BIOS Main page to check if the memory is running at the adjusted frequency.

